



COBRA®
A SIGNODE BRAND

PRODUCTS
SERVICES
INTEGRATION
AUTOMATION



pack



bundle



unitize



warehouse



transport



COBRA® TT

Semi-Automatic Turntable Stretch Wrapping Machines

Maximizes Throughput

Wraps up to 35 pallets per hour depending on load size and wrap pattern

User-friendly Operation

Intuitive controls and programmable settings for a consistent and precise wrapping

Optimum Wrapping

Stores different wrapping programs to streamline operation for different pallet sizes and load shapes

Simplifies Operation

Easy to install, operate and maintain. Minimal operator training required



SIGNODE

COBRA TT

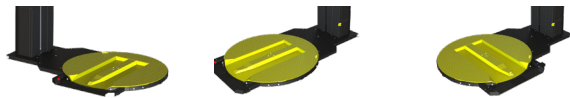
Semi-Automatic Turntable Stretch Wrapping Machines



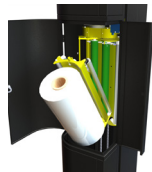
The core component of the Cobra TT semi-automatic wrapping machines is a rotating turntable where the palletized load is placed for wrapping. As the turntable rotates, the stretch film is dispensed and wrapped around the load for optimum pallet load stability. Equipped with a power pre-stretch system stretching the film up to 300% before application a constant control of the film consumption is provided. Combined with a step-less control of both the turntable and film carriage speed the optimum film force to load for optimum pallet load stability can be provided. Wrapping with up to three support layers at any load height for increased load stability. Via an easy integrable option, the machines can be supplied with a roping device for additional load stability.

Features and benefits

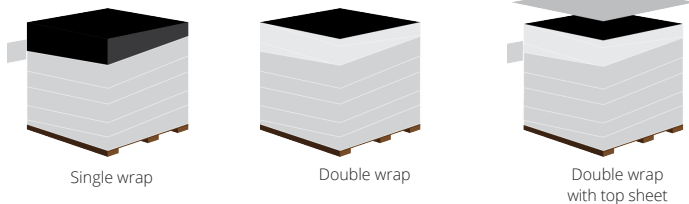
- When equipped with turntable for pallet jack, up to three positions are available for loading the pallet - allowing for optimum positioning of the machine in the wrapping area.



- Film carriage housed within the machine tower - less moving parts. Ergonomic loading height of the film roll.



- Three different wrapping methods are available.



In addition to the three wrapping methods following parameters can be included in a wrapping program:

1. Number of top wraps
2. Number of bottom wraps
3. Amount of film applied over the pallet top edge
4. Three support layers at any load height

Options

- Load stabilizer for wrapping of light and sensitive products
- Film roping for improved pallet to load retention
- Access ramp / Pit mounting kit
- Turntable designed for palletjack

COBRA TT Technical Specifications

Wrapping Height (Max.)	2950 mm (116.1")
Pallet Dimension (Max.)	1200 x 1200 mm (47.2 x 47.2")
Pallet Height (Max.)	2900 mm (114")
Pallet Weight (Max.)	2000 kg (4400 lbs)
Machine Weight	490 kg (1080 lbs)
Wrapping Capacity *	35 pallets / hour
Pre-Stretch Level	up to 300%
Rotation Speed	1-11 rpm
Power Supply	220-230VAC / 50 Hz / 1.1kW / 16A (110-120VAC / 60 Hz / 1.34HP / 16A)
Operating Temperature	5-40°C (40-100°F) at max. relative humidity of 76%
Film Type	Machine stretch films (8-30 my / 0.31-1.18 mil) in either virgin or PCR quality - available from Signode

*Depending on pallet size and number of film revolutions. Air supply is not needed.

