



COBRA®
A SIGNODE BRAND

PRODUCTS
SERVICES
INTEGRATION
AUTOMATION



pack



bundle



unitize



warehouse



transport



COBRA® RA

Semi-Automatic Rotary Arm Stretch Wrapping Machines

Maximizes Throughput

Wraps up to 25 pallets per hour depending on model, load size and required wrap pattern

Ease of Use for Operators

Designed to be user-friendly with straight forward controls

Optimum Wrapping

Stores different wrapping programs to streamline operation for different pallet and load sizes

Application Flexibility

Suitable for a variety of load types and sizes from heavy to lightweight



SIGNODE

COBRA RA

Semi-Automatic Rotary Arm Stretch Wrapping Machines



The Cobra RA machines use the rotary arm technology to rotate the stretch film carriage around the palletized load to wrap the film around it while the load remains stationary. Therefore, the Cobra RA machines are ideal for wrapping loads that are unstable, light, very heavy or odd-shaped.

Features and benefits

■ Consistent Wrapping Performance

Film tension control throughout the wrapping cycle helps to provide consistent performance and optimal film consumption.

■ Superior Functionality

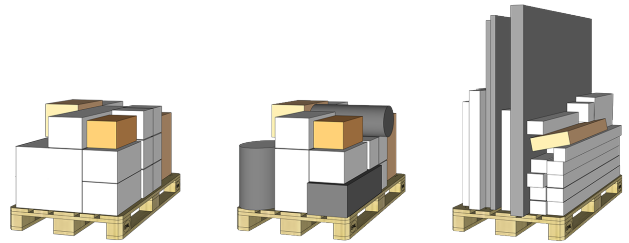
The Cobra RA machines feature an easy-to-use touchscreen operator interface that enables the operator to easily adjust the number of wraps, wrap patterns, stretch film tension, overlap and settings for peak functionality. Individual wrapping programs can be stored to meet the demands of the most challenging applications.

■ Pre-Stretch Control

The Cobra RA-P comes with a Power Pre-Stretch System (PPS) for optimum packaging quality and reduced film consumption. The Cobra RA features an electro-magnetic brake system easily controlled via the HMI for a consistent application of film as well as a controlled film consumption. No need to manually cut the film after end wrapping in the Cobra RA. A film cut device punches the film and the rotary arm pulls the film until fully separated from the film roll.

Options - depending on model type

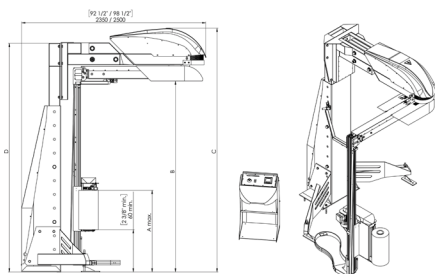
- Mechanical Roping Device - for improved load stability.
- Two-color Laser Marking Device available for Cobra RA. One light marks the correct pallet positioning area, and another light marks the operating area of the machine. For improved sustainability the machine goes into sleeping mode when idle. The lights automatically turn on when entering the laser marking areas.
- Obstacle Detection Device - slows down the speed of the rotation arm when an obstacle in front of the bumper is detected. Wrapping cycle can be resumed after obstacle has been removed. Allows for a more controlled wrapping and a soft stop when needed.



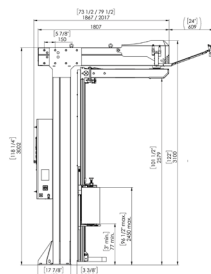
Technical Specifications

Machine Model	Cobra RA-P	Cobra RA
Typical Operating Speed *	25 pallets per hour	25 pallets per hour
Load Weight	Unlimited	
Wrapping Height (Max.)	2930 mm (115.3")	2450 mm (96.5")
Pallet Height (Max.)	2900 mm (114.17")	2400 mm (94.5")
Pallet Dimensions (Max.)	1400 x 1400 mm (55.1 x 55.1")	1200 x 800 or 1200 x 1200 mm / (47.2 x 31.5" or 47.2 x 47.2")
Total Weight	710 kg (1565 lbs)	400 kg (882 lbs)
Power Supply	220-230VAC / 50 Hz / 0.8 kW / 16A (110-120VAC / 60 Hz / 1.34HP / 16A)	220-230VAC / 50Hz / 0.55 kW / 16A (110-120VAC / 60 Hz / 1HP / 16A)
Room Temperature	5-40°C (41-104 °F)	5-40°C (41-104 °F)
Emission Sound	< 70 dB (A)	< 70 dB (A)
Film Type	Machine stretch films (8-30 my / 0.31-1.18 mil) depending on used pre-stretch & film thickness	Oriented films (6-8 my / 0.24-0.31 mil) or machine stretch films (8-30 my / 0.31-1.18 mil)
	Virgin or PCR quality – available from Signode	
Reel Width (Max.)	500 mm (19.68")	375-500 mm (14.76-19.68")
Film Roll Ø (Max.)	250 mm (9.84")	300 mm (11.81")
Film Carriage	PPS Power Pre-Stretch	Mechanical / Electro-magnetic brake

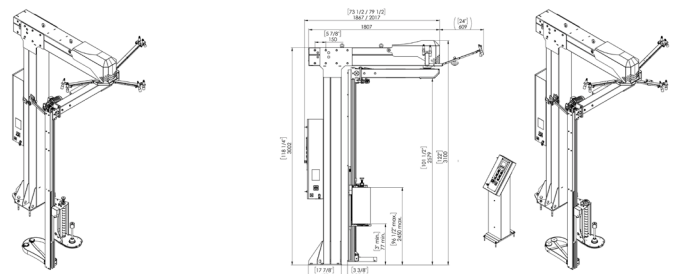
*Depending on pallet height and number of wraps.



Cobra RA-P
Cobra Rotary Arm with Power Pre-stretch



Cobra RA
Cobra Rotary Arm with integrated control panel



Cobra RA
Cobra Rotary Arm with stand-alone control panel

The company reserves the right to make technical alterations without prior notification.
©2024 Signode Industrial Group LLC / ID-489/ O-240925 / www.Signode.com
For queries please contact Signode Industrial Group LLC at marketing@signode.com

