



**COBRA®**  
A SIGNODE BRAND

PRODUCTS  
SERVICES  
INTEGRATION  
AUTOMATION



pack



bundle



unitize



warehouse



transport



# YELLOW JACKET™

## Orbital Stretch Wrapping Equipment

### Robust Construction

Minimal maintenance needed throughout the lifetime of the machine

### Production Flexibility

Accommodates variable load sizes to satisfy packaging challenges

### Operator Friendly

Simple intuitive push button machine controls for ease of operation

### Optimizes Performance

Orbital wrapping with minimal labor costs and improved line efficiency



**SIGNODE**

# YELLOW JACKET

## Orbital Stretch Wrapping Equipment



The Yellow Jacket orbital stretch wrap machine is designed for securing over-sized, oddly shaped, palletized loads while the pallet is on the forklift. The horizontally positioned stretch wrap dispenser automatically moves around and across the length of the load. The machine has a capacity of up to 25 pallets an hour depending on pallet size and number of film revolutions.

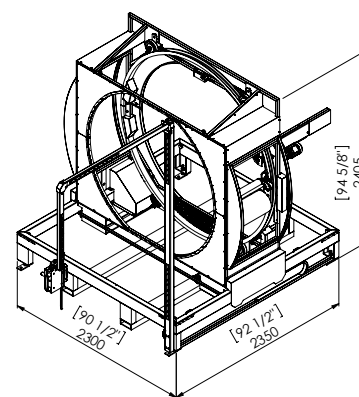
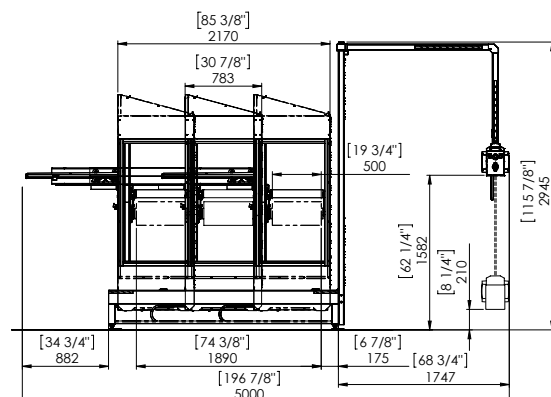
The Yellow Jacket orbital stretch wrap machine significantly reduces the time and number of workers required to wrap a load allowing for considerable labor cost reductions. Two workers may take up to 10 minutes to wrap a load by hand. With this machine, one worker can wrap a load in one minute depending on the number of required film revolutions. The Yellow Jacket stretch wrap machine also can eliminate the need for other strapping materials and expensive cartons to secure loads, as the tight wrap helps prevent the load from shifting, falling, or sliding during transit.

### Features and benefits

- Film overlap and the rotational speed of the film carriage can be adjusted by means of potentiometer for optimum wrapping pattern
- Film tension can be adjusted by rotating the adjustment knob of the brake roller for improved load stability
- Full control of where to start and stop the wrapping cycle
- Machine can run up to 20 revolutions per minute
- Available as a semi-automatic or a manual model

### Semi-automatic model

- Operator controls the wrapping process and all machine functions from the seat of the forklift
- Joystick remote control allows for ease of use



Semi-Automatic Unit

### YELLOW-JACKET Technical Specifications

Machine Model	Semi-Automatic Unit	Manual Unit
Overall Dimension (W x L x H)	2300 x 2350 x 2945 mm (91" x 93" x 116")	2300 x 2350 x 2405 mm (91" x 93" x 95")
Max Load Diagonal	1725 mm (68")	1725 mm (68")
Max Load Wrap Length	1800 mm + 50 mm in front end of load +50 mm on back side of load (70.9" + 2" in front end of load +2" on back side of load)	1800 mm + 50 mm in front end of load +50 mm on back side of load (70.9" + 2" in front end of load +2" on back side of load)
Machine Weight	670 kg (1480 lbs.)	580 kg (1280 lbs)
Wrapping Capacity *	15-25 pallets / hour	15-25 pallets / hour
Rotation Speed	5-20 rpm	5-20 rpm
Power Supply	230VAC – 1p, 50 Hz / 16A (110VAC / 60 Hz / 16A)	230VAC – 1p, 50 Hz / 16A (110VAC / 60 Hz / 16A)
Operating Temperature	Operating temperature 5-40°C (40-100°F) at max relative humidity of 76 %	
Film Type	Oriented films (7-10 my / 0.28-0.39 mil) or machine stretch films (8-30 my / 0.31-1.18 mil) in either virgin or PCR quality – such as Mima® films available from Signode	

\*Depending on pallet size and number of film revolutions  
Air supply is not needed

The company reserves the right to make technical alterations without prior notification.  
©2024 Signode Industrial Group LLC / ID-487 / REV-250516 / [www.Signode.com](http://www.Signode.com)  
For queries please contact Signode Industrial Group LLC at [marketing@signode.com](mailto:marketing@signode.com)

