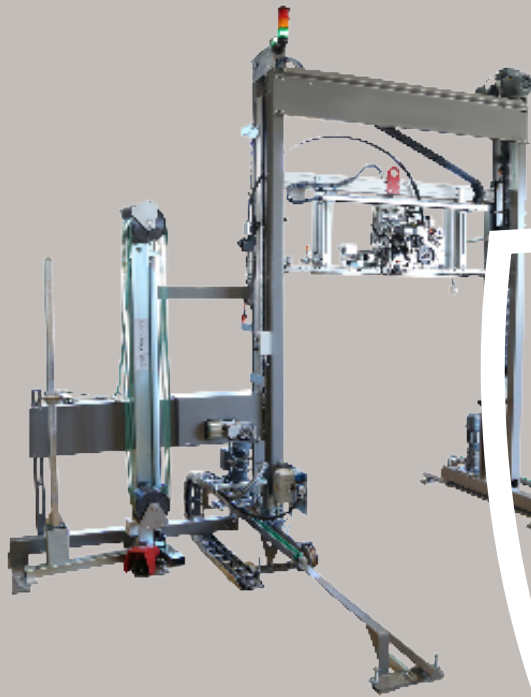


# TSM-6500



## Strapping machine

**Top Sealing Machine for plastic strapping applications.**

### Mark of quality

For maximum flexibility, highest productivity and performance.

### Flexible head intergration

Modular design allows use of various strapping head types.

### High speed productivity

Auto strap feed-up and re-feed from dispenser.

### Low operation cost

Long life and wear free brushless drive motors.

# TSM-6500

Our fully automated Top Sealing Machine for plastic strapping applications

## Reasons why our strapping machines are the choice for customers:

### ■ High reliability

Durable design and components for 24/7 operation.

### ■ Easy to service

Few wearing parts, easily exchangeable.

### ■ Increased performance

Floating head carriage for consistent and high retained strap.

### ■ Reduced operator training needs

7" HMI operator touch screen for intuitive operation and simplified trouble shooting.

### ■ High seal efficiency

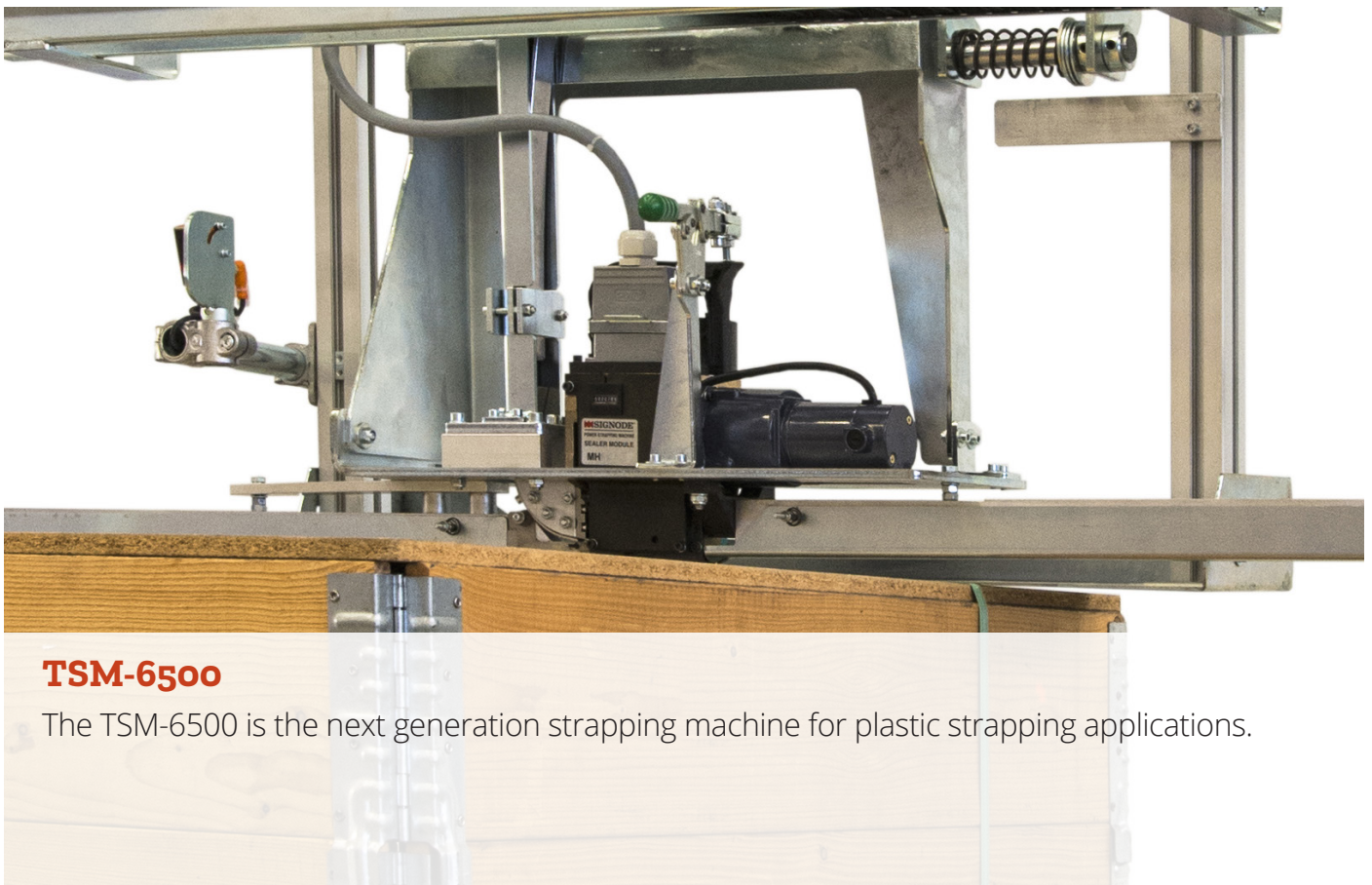
Friction weld technology.

### ■ Customisation and flexibility

Low height of bayonet and adjustable speed for customisation and higher throughputs.

### ■ Lower cost of ownership

Direct brushless drives (without clutch, belt) for less service.



## TSM-6500

The TSM-6500 is the next generation strapping machine for plastic strapping applications.



## Key elements of our products:

Why the TSM-6500 is the new industry standard for plastic strapping applications.

### ■ Higher throughput and productivity

Telescopic chute system and strap feeding at any height in chute and closed strap guide for safer and improved strap feed.

### ■ Improved operation

Head outrigger with fast variable speed drive motor. Safer operation with three-fold safety level on lifting chains.

### ■ Remote data support

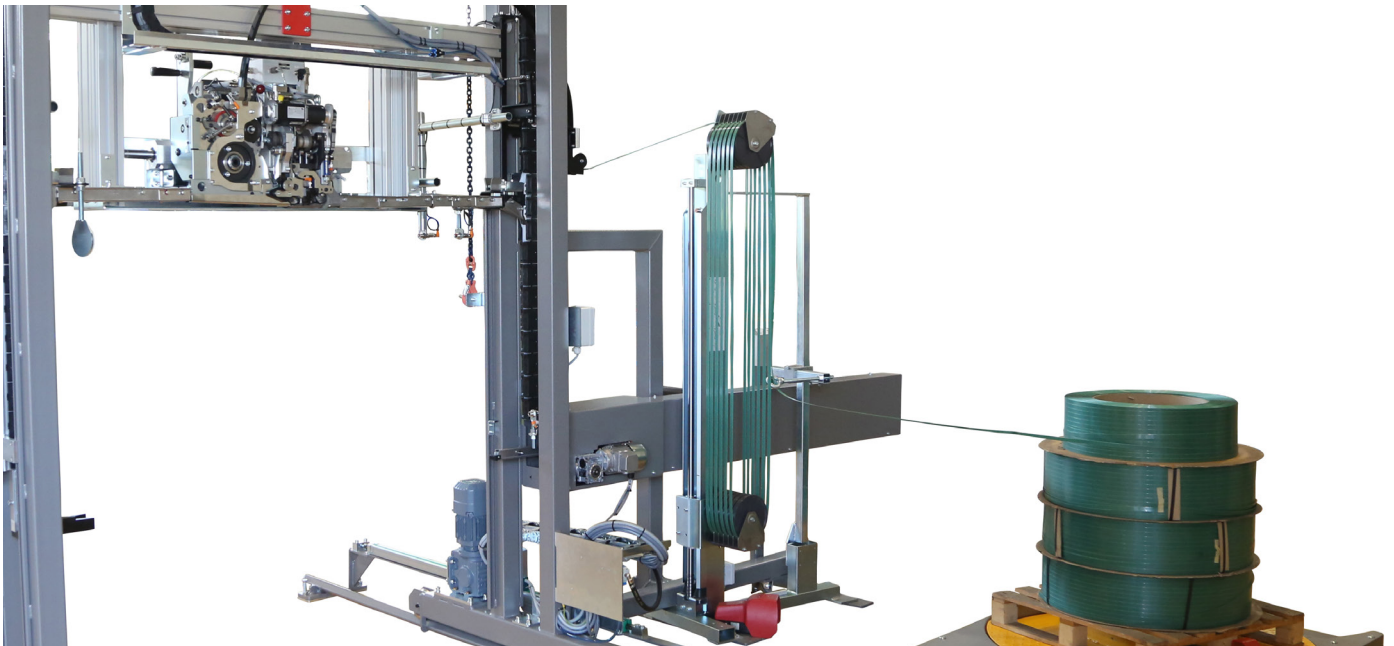
Diagnostic access via network (optional on request) easy service.

### ■ Increased durability

Durable and robust design and components for highest availability.

### ■ High seal efficiency

Friction weld technology, immediately available, no pre-heating time.



## Flexible dispenser and production options

Standard dispenser for medium and heavy duty heads H3000 / H6500. Jumbo dispenser station option for maximum machine uptime. Direct brushless drives reduces service needs and lowers TCO. Adjustable speed of bayonet for higher customisation and higher throughputs. Full-length strap-flaps on bayonet for increased reliability.



# TSM-6500

## Our Top Sealing Machine



### Used for a wide range of applications

The modular design allows the range to use various strapping head types to be used with a machine design.

This possibility for flexible head integration allows a large field of applications to be covered as well as being able to use flat and embossed plastic strap with friction weld technology.

Industry standard performance and reliability for higher productivity and lower ownership cost.

TSM series combines rationalised construction with even more durable wear parts for reduced total cost of ownership.



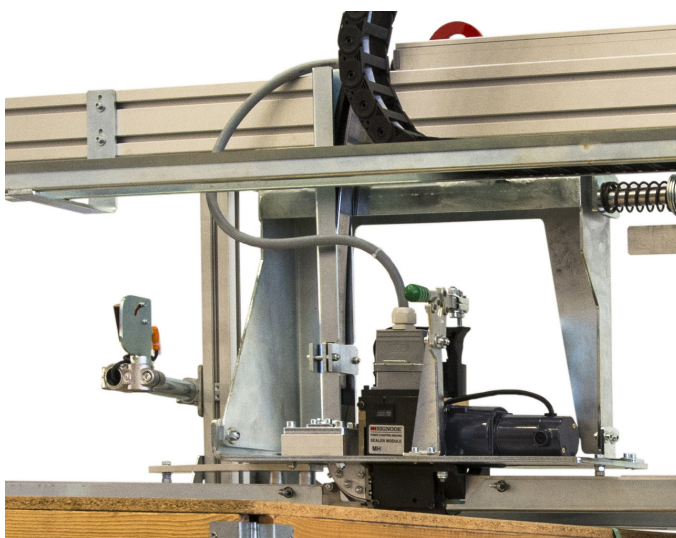
### Intuitive HMI display panel

An icon driven control panel that provides step by step prompts for easy set up.



### Improved head carriage

Fast variable speed drive motor with three-fold safety level on lifting chains.



### Flexibility in production

Low height bayonet or special protected bayonet for flexibility.



### Intelligent strap dispenser

Auto strap feed-up and re-feed from dispenser into sealer for MHC heads.

# TSM-6500

(Heavy duty high tension applications)

PRODUCTS

SERVICES

INTEGRATION

AUTOMATION



pack



bundle



unitize



warehouse



transport

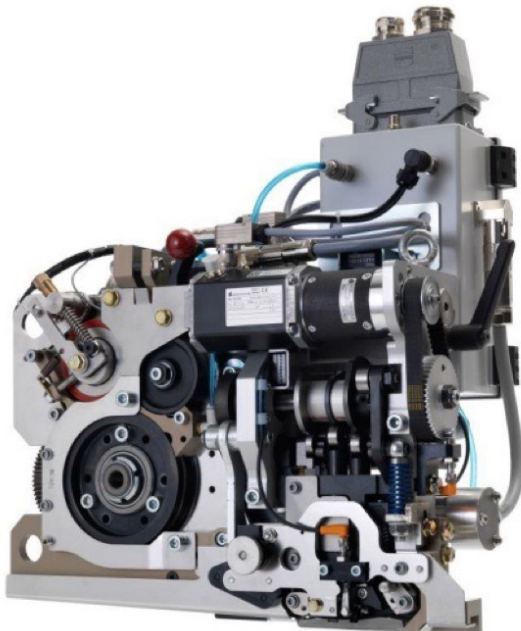
## Key Technical Specifications

Pack Width (mm)	300 - 1650
Pack Height (mm)	200 - 2500
Strap Sizes (mm)	16 - 19
Strap Types	Polypropylene and Polyester
Strap Tension (N)	500 - 6.500
Strap Feed Speed (m/s)	5.1
Controller	Siemens S7 - 1200 type
Operator Display	7" HMI TFT Screen
El. Connection	400 V 3 Ph 50 Hz
El. Consumption (kVA)	3.0
Control Voltage	24 V DC
Machine weight (kg)	800

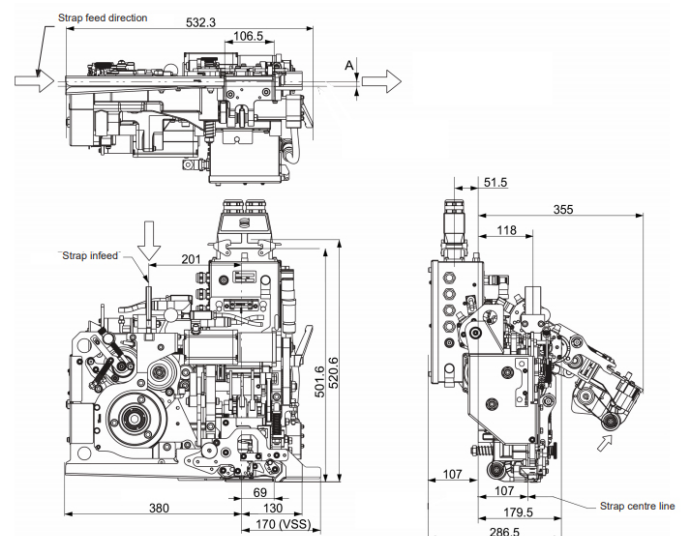
## Machine options

- Low on strap indicator
- Package pre-height dedection
- Electrical indexing machine\*
- Package pre-height dedection
- Variable height adjustable
- Jumbo coil strapping dispenser\*
- Conveyor and turntable options\*
- Load positioning & conveyor controls
- Machine guarding package
- Profibus DP/ Profinet
- Soil protected bajonet\*
- Electrical load compression\*
- Automatic top edge-protection
- Special colour (RAL)

## Product



## Layout



\* Depending on machine execution