

# SIG-CORR



## SIG-CORR

### Squaring and strapping for specialty-glued cartons

#### High-speed Bundling

Up to 30 bundles per minute and automatic refeed to maximize production capacity

#### Minimizes Maintenance

Minimal preventative maintenance provides long-lasting machine operation

#### Operator- friendly

Icon-driven HMI with auto bundle format option reduces set-up time to under 30 seconds

#### Product Variability

Manufactured with built-in features to enable special handling for differing product lines

# SIG-CORR

## Squaring and strapping for specialty-glued cartons

The SIG-CORR automatic squaring bundler provides high-speed bundling capabilities for specialty-glued items, including lock bottom, trays and lids, tubes and straight line cartons. Up to 50% faster in some specialty folder gluer applications, the SIG-CORR is manufactured with intuitive features to ensure continuous strapping and maximum uptime.

### Features and benefits

#### ■ Minimizes production interruptions

From signal lights to indicate low strap to end-of-strap monitoring with auto ejection, the SIG-CORR has standard built-in features to keep production downtime to a minimum. Exclusive to Signode, XL strap coils with 42% more strap per coil reduce changeover downtime.

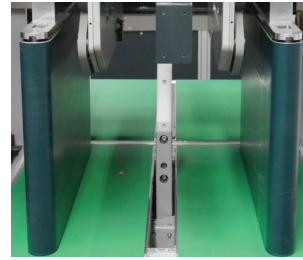
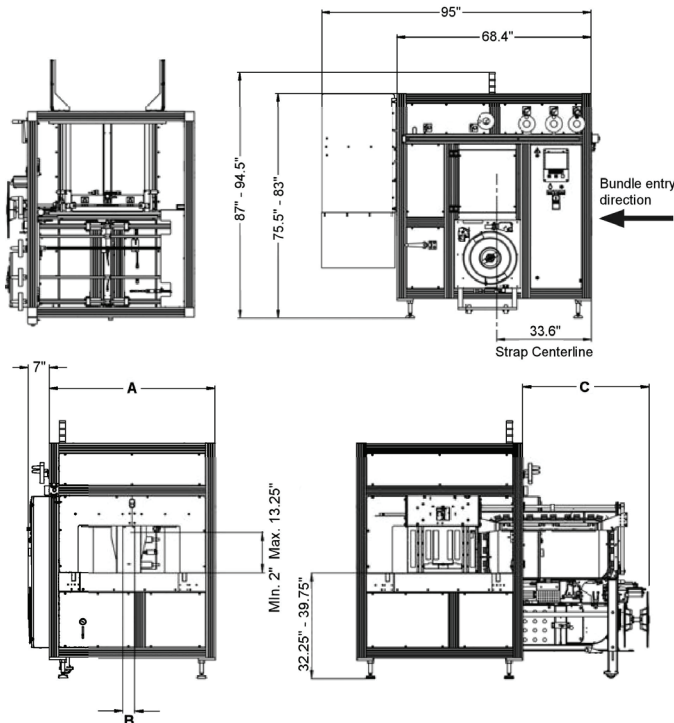
#### ■ Simplifies maintenance requirements

The SIG-CORR's chute and head can be rolled out of the main frame for maintenance. To simplify troubleshooting, the SIG-CORR is equipped with patented easy access strap guides that require no tools for entry. Plus, a segmented strap chute with a lifetime warranty on the flaps and one wear part eliminate costly repairs and maintenance downtime. Service interval notifications alert operators to scheduled machine maintenance recommendations.

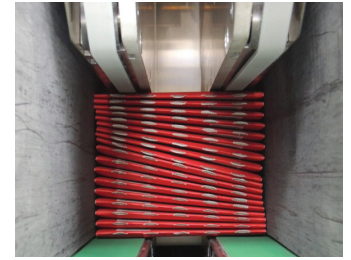


#### ■ Provides production versatility

The SIG-CORR can accommodate production changes quickly and easily. Storage of up to 5,000 bundle configurations along with a low-tension strap ejector further ensure maximum productivity despite changing production needs.



Driven side guide belts with  
an optional rear-pusher



Top-belt drive unit with  
soft-touch belt surface

### SIG-CORR Technical Specifications

Cycle Rate Per Minute (Max)	Center up to 30 bundles
Conveyor Speed	Variable from 0.19 m to 0.98 m (.65 to 3.2 ft/sec)
Strap Tension	Variable up to 311 N (70 lbs)
Strap Material	Polypropylene 5 mm embossed
Electrical Requirement	460 Volt, 16 AMP, 60 Hz
Pneumatic Requirement	620.5 kPa (90 psi)
Pneumatic Consumption	3998 cubic cm (244 cubic inch) per cycle (free air)
Environmental Condition	4.4° to 43.3° Celsius (40° to 110° Fahrenheit)

### Machine Dimensions

		SIG-CORR 850	SIG-CORR 1250	SIG-CORR 1650
Frame Width	A	1422 mm (56 in)	1809 mm (71.25 in)	2210 mm (87 in)
Package Width	B	127 mm to 850 mm (5 in to 33.5 in)	127 mm to 1250 mm (5 in to 49.5 in)	139 mm to 1650 mm (5.5 in to 65 in)
Service Clearance	C	1073 mm (42.25 in)	1276 mm (50.25 in)	1473 mm (58.2 in)

### SIG-CORR options

- Bundle rear alignment pusher
- Second bundle stop front squaring plate
- Fully automatic format adjustment
- Stainless steel infeed packing table
- Stainless steel infeed stacking guide plate
- Spare quick-change strap dispenser
- Spare parts kit