

# Pallet Frame

## Edge protection

### Highly Sustainable

Made from 100% recycled materials and are fully recyclable

### Simplifies Use

Lightweight, one-piece design doesn't require assembly

### Application Versatility

Can be used for edge protection, unitization and stabilization

### Cost-effective

Economical alternative to other protective packaging materials

# Pallet Frame

## Edge protection



Pallet Frame is an economical protective packaging material used for edge protection, unitization and stabilization. Its lightweight, preformed one-piece design doesn't require assembly, simplifying application.

### Features and benefits

#### ■ Multifunctional design

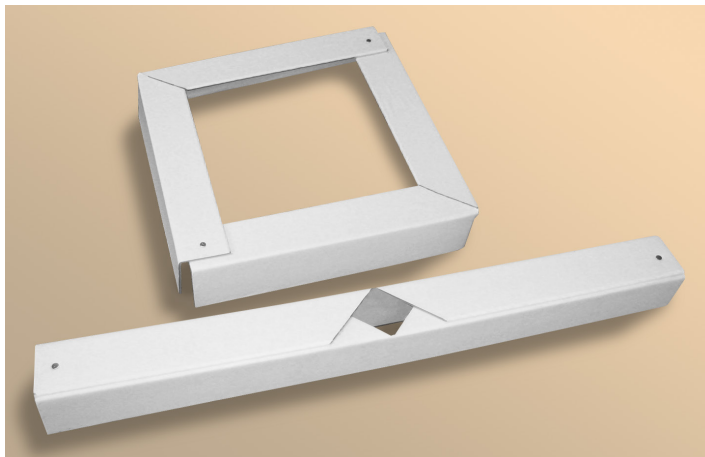
From improving stability on irregularly palletized loads to providing a more level, uniform stacking surface, Pallet Frame's unique construction makes it ideal for a wide variety of product applications. An eco-friendly alternative to wood pallet tops, it can be used as a more sustainable, cost-effective replacement for traditional packaging products.

#### ■ Simplifies use

Pallet Frame remains in place without additional securement, making it easy to apply stretch wrapping or strapping to the load, further enhancing load stabilization.

#### ■ Application-specific solutions

Available in white or brown, Pallet Frame can be tailored to suit different product applications, including sizing to meet specific product requirements. In addition, it can be custom printed, allowing for product identification and point-of-sale merchandising.



### Pallet Frame Technical Specifications

Pallet Frame sizes are based on the following dimensions

<b>A   Leg Length One</b>	50 x 50 mm (2 x 2 in)
	64 x 64 mm (2.5 x 2.5 in)
	76 x 76 mm (3 x 3 in)
<b>B   Caliper</b>	2.2 mm (.090 in)
	4.0 mm (.160 in)
	4.5 mm (.180 in)
	5.0 mm (.200 in)
	6.1 mm (.240 in)
<b>C   Length</b>	Minimum: 304 mm (12 in)
	Maximum: 2438 mm (96 in)

