

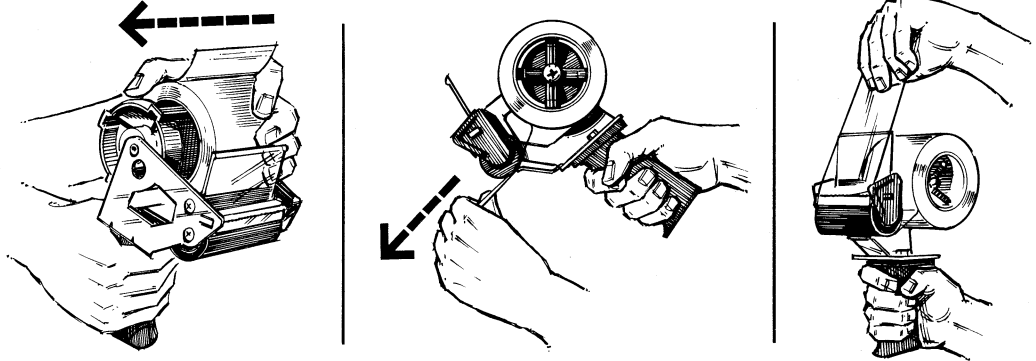
Signode™ A-300 Carton Sealing Tape Applicator

Part No. 258 136



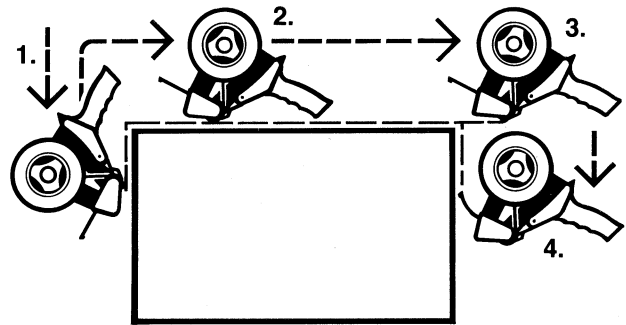
Loading the applicator

- Mount roll of tape on mandrel so that the tape unwinds adhesive side down.
- Hold pistol grip in your right hand, and pull tape with left. Unwind tape approximately 4"-6" and thread it between the anti-backup lever and the tape application roller.
- When tape is centered on roller, cut off excess tape by pulling against cutter blade.



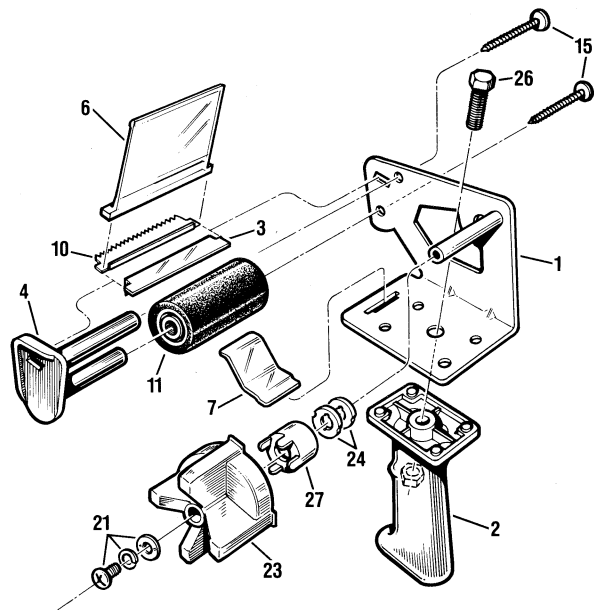
Quick, one-hand carton sealing with the Signode™ A-300 Applicator

1. Position carton sealing applicator on front side of box, near front edge, with applying roller centered on top seam. Roll the applicator down the side of carton approximately two inches, pressing tape lead end to side of box.
2. Pull applicator across top seam of box, always applying firm pressure on the roller for a tight seal. While pulling, keep butt of handle as low as possible on the carton so tape is not prematurely cut.
3. Pull applicator two inches past the end of the carton (approximately the length of the wipe-down paddle).
4. While pressing applicator wipe-down paddle against the corner of the carton, push applicator down to cut the tape, and fully wipe tape end to side of carton.



Signode™ A-300 Applicator part numbers

Key No.	Signode Part No.	Description
1	258 893	Metal frame (A-300)
2	258 894	Handle (A-300)
3	258 895	Static plate (A-300)
4	258 896	Frame — applying roller (A-300)
6	258 897	Tape pressing paddle (A-300)
7	258 898	Anti-backup lever (A-300)
10	258 899	Cutting blade (A-300)
11	258 900	Applying roller (A-300)
15	258 901	Screw — M5 x 40 (2) (A-300)
21	258 902	Screw — M6 x 10 (A-300)
21	258 903	Lock washer — M6 (A-300)
21	258 904	Flat washer — M6 (A-300)
23	258 905	Tape roll mandrel (A-300)
24	258 906	Brake — tape roll mandrel (2) (A-300)
26	059 918	Nut — 5/16-18 (A-300)
26	006 304	Bolt — 5/16-18 x 1" (A-300)
27	258 909	Brake cover (A-300)



SIGNODE®

SIGNODE • 3610 W. LAKE AVENUE • GLENVIEW, ILLINOIS 60025